

# Boothindustries

Pushing The Boundaries Of Excellence

Leading the high-performance assurance market for over 40 years.





## Welcome to Booth Industries

At Booth Industries, we are proud to be recognised as an international service provider, specialising in the design, manufacture, supply and installation of high-performance assured solutions.



Our core product range incorporates your complete protection needs, including doors, windows, relief panels and blast-resistant structures. We relish the opportunity to use our experience and diversity in the assurance market to add unrivalled value to our customers.



Today, the business has been at the forefront of the high-performance assurance market for over 40 years. We continue to enjoy lasting success on some of the UK's largest construction and infrastructure projects, including London Underground, Crossrail, Sellafield, AWE, BAE Barrow, and most recently HS2.

Booth Industries is now in the unique market position of being the only provider of a complete portfolio of performance-certified steel doors, as well as having the ability to innovate and lead development through design wherever the client or project demands.

We look forward to delivering a personal service, tailored to your specific project needs.





## Our Mission

At Booth Industries, we have a clear and simple mission that aligns our company vision with the values we hold of upmost importance:

**'To provide a tailored service that guarantees high-performance assured solutions, by investing in our people and collaborating with customers to push the boundaries of excellence'**

We pride ourselves on being able to identify the very best talent across the engineering and manufacturing spectrums. By harnessing their natural ability, and by nurturing individuals throughout their development, we have created a solid foundation that pays dividends to our continuous improvement culture.



Our commitment to innovation is manifested through our dedication to R&D, which regularly exceeds £1m investment per year. We have established robust partnerships with local universities and approved certification bodies, allowing us to continually learn and evolve through testing and development.

Empowering the local communities to imagineer solutions to real world problems, under the guidance of our trusted employees, has been a key factor in our continued success.

Whether you're seeking a product for a specialised environment, something from our pre-certified design range, or bespoke support for engineering or manufacturing solutions, we invest in every relationship to ensure the outcome is right for you.



## Our Track Record

Our business is steeped in rich history, having been originally formed by John Booth in 1873 as a family-run blacksmiths. Over the past 40 years, we have galvanised our position as leaders in the high-performance assurance market through consistent project delivery. Some of the high-profile successes we have delivered include:



**1993**

### **Downing Street Refurbishment**

In the wake of the Gulf War, and with the UK facing a growing security threat from terrorism, Booth Industries was commissioned to supply and install new security windows and doors to protect the Prime Minister's Office and Staff. The upgrades we implemented remain in-situ and operational today, providing our nation's leaders with the assurance that their safety is protected by Booths.



**2004**

### **First Offshore Escape Tunnel**

As the North Sea oil & gas sector continued its growth in the early 2000's, Booth Industries was selected as preferred supplier to design, manufacture and install the first ever offshore escape tunnel to align with safe egress procedure from the rigorous offshore environment. Our pioneering Jet Fire Rated Stainless Steel Escape Tunnel was installed on the Kvitjeborn topside in the Norwegian North Sea.



**2015**

### **Crossrail Project (Systemwide)**

The largest assurance programme ever undertaken within the UK infrastructure sector fell on Booth Industries to deliver. Our scope incorporated the design, manufacture and installation of over 700 doors across the Elizabeth Line, including station, cross-passage and front-of-house doors. The tragedy of Grenfell Tower in 2017 instigated a long overdue review of fire regulations, which aligned with Booth's testing and assurance philosophy from the outset.





“Only by understanding our past,  
can we shape our future”



**2015**

### **AWE Project MENSA**

In 2015, Booth Industries commenced design work for AWE under the Project MENSA order. The working relationship between AWE and Booth Industries continues today, with additional projects for AWE Burghfield and opportunities for further work at Aldermaston. The contract has yielded some extremely valuable testing to date and was instrumental in establishing a quality benchmark that we have rolled out across all of our projects since.



**2019**

### **British Antarctic Survey – Rothera**

In December 2019, Booth Industries was named as the preferred supplier for 16 cargo and personnel doors to be installed at British Antarctic Survey – Rothera base. The doors benefit from high thermal performance, coupled with trace heating and hydraulic functionality. Booths has successfully worked with the operational team in the Antarctic to agree design principles based on our knowledge of manufacturing and transportation feasibility.



**2020**

### **Cross-Passage Doors – HS2**

Booth Industries was specially selected by HS2 to design, assure, manufacture and install over 300 sliding cross passage doors along phases 1a and 2 of the new HS2 route. Providing fire integrity and insulation protection for up to two hours, the doors will also have to withstand severe pressure fluctuations and fatigue as trains pass within metres of the doors at speeds in excess of 200 miles per hour. It was Booth's unrivalled experience and knowledge in this sector that gave HS2 the comfort of guaranteed performance and protection along the route.



## Our Service Promise

"Pushing the boundaries of Excellence" means delivering a service that goes beyond simply designing, manufacturing, delivering and installing door sets and protection systems for our customers.

We aim to add value at every stage of the process. Our comprehensive in-house team allows us to offer a complete life-cycle solution to suit the demands of every individual project.



### Engineering

Our in-house team of qualified and highly experienced engineers is fluent in mechanical, civil, structural, and EC&I disciplines.

We support the team with state-of-the-art design software, compatible with the majority of BIM platforms. We use FEA package ANSYS to demonstrate computational fluid dynamic (CFD), linear-static and non-linear elastic design compliance.

Engineering is the home of our R&D team, which integrates all areas of the business to ensure product viability and optimisation is achieved throughout.



### Project Management

Our experienced team ensures that every single stage of the process is run smoothly and is well communicated with our customer. Working closely with our project planners ensures that the programme is regularly and accurately updated to identify any changes or risks to delivery. Delivering on time is key and perfection is our passion. Our project management team includes chartered project managers, qualified quantity surveyors and experienced P6 planners.



### Assurance

Our annual assurance programme consists of project-specific product testing and new product development. Collaborating with local and international fire testing authorities ensures we are able to secure optimum testing dates and supports us with testing efficiencies. We have onsite testing facilities to accommodate air leakage, security, and/or acoustic testing, and this enables us to understand as much as possible about our products and their ancillaries.

'Our commitment to destructive testing gives our customers the assurance they need that Booth Industries will develop a solution that meets their demands.'



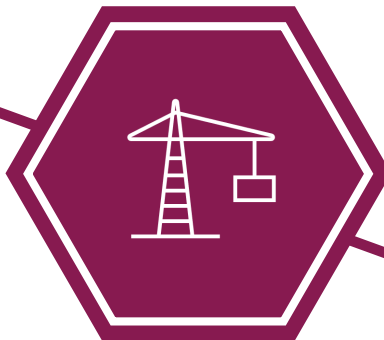
"Working with Booth on Crossrail was a joy. They worked collaboratively to ensure we managed the volume of doors that we required throughout the programme through some challenging times, whilst they always maintained the quality of product and installation that we required."

**Sharif Narouz,**  
Crossrail Supply Chain Delivery Director



## Manufacturing

Booth Industries has dedicated manufacturing premises geared towards the assembly, inspection and testing of all our products. Our skilled operatives take pride in making sure the end product is as specified, with the finish and quality that is expected of the Booth Industries brand. We provide a safe and secure working environment to support the wellbeing of our workforce, enabling them to concentrate on producing products of the highest quality.



## Installation

As part of our continual commitment to customer value, we offer a complete installation and commissioning service, fully certified to ISO 9001. Our site installation teams are experienced in carrying out installations in the most challenging of environments. We promote site operations under a 'one team' philosophy, ensuring that ourselves and all other site trades are always aware of each other, and support each other to ensure the safe delivery of project programmes.



## Service & Maintenance

Booth Industries' products are designed and manufactured to stand the test of time in some of the world's most severe environmental conditions. We advise incremental inspection of all our products to ensure their continued operation, and to make sure the surface finish retains the product's integrity. This is where we add further value: Our Service & Maintenance department holds SC clearance and has the technical experience to ensure the service life of any doors can be maintained.

'Our internal R&D team keep us at the forefront of innovation through continual manufacturing process efficiency, new product development, and assurance management'



## Our Product Market Groups

At Booth Industries, we separate ourselves from our competitors by the value-add we bring to our customers. It is this recognised and established extra value that has sculpted our business, focusing on product market groups as opposed to standalone products.

Our distinct product market groups hold equal importance to the balanced continuation of our business.

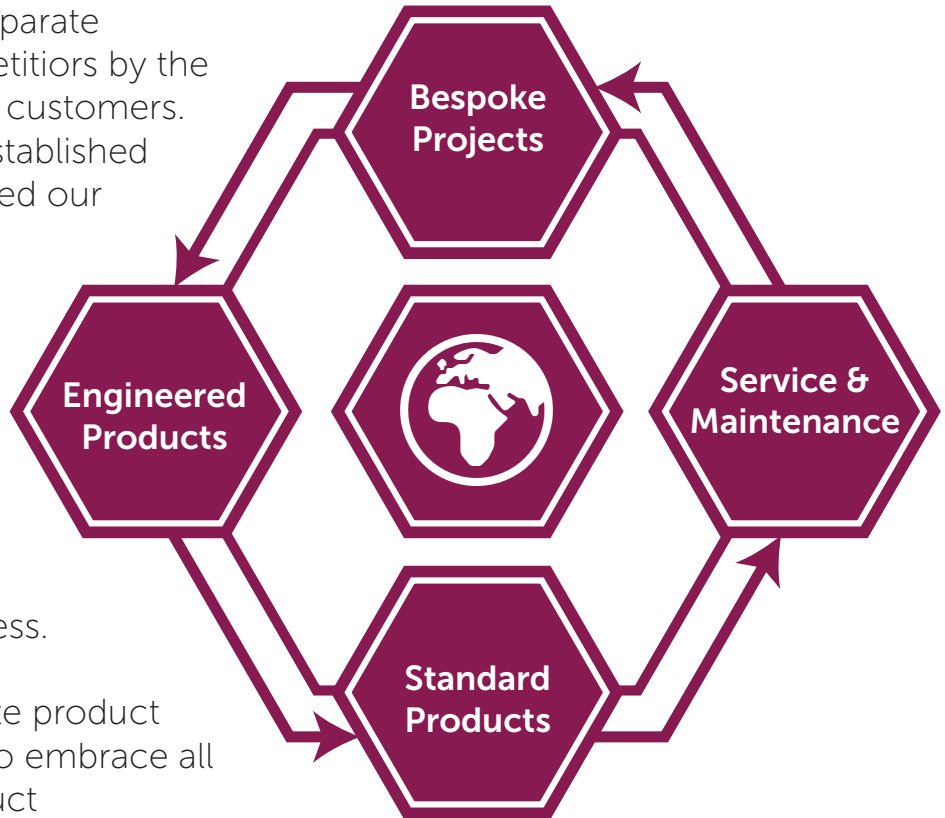
Recognising these separate product market groups allows us to embrace all forms of projects or product requirements, and tailor the requirements to meet each customer's individual needs, without unnecessary impacts on programme or cost.

Each product market group involves all of our key sectors, enabling us to build consistent relationships for all our key customers, while covering all sectors and products. Our approach to key account management also ensures that our focus remains on delivering the complete peace of mind needed when operating in highly regulated markets, regardless of product, product market group or business sector.

Our focus on assurance and quality across all product market groups enables us to cover demanding sectors such as:

- **Nuclear Defence**
- **Civil Nuclear**
- **Infrastructure**
- **Offshore Oil & Gas**
- **Defence & Security**
- **Renewable Energy**
- **Petrochemical**
- **Aviation**

For further case studies and full details of our track record, please visit us at [www.booth-industries.co.uk](http://www.booth-industries.co.uk)







## Bespoke Projects & Products

The decisive factor in choosing Booth Industries for your design project is our ability to deliver projects that our competitors simply cannot. While our service promise and employees play a fundamental role, the investment in our facilities and tools has been tailored to support this specialist product market group.

We define a “bespoke project or product” as something we have to engineer from first principles, and for which we have no viable testing evidence. These projects are conventionally delivered as key players in a project team, however we are more than familiar with working to a technical specification and delivering in accordance.

Many of our mechanically or electrically-driven products start their lives in this product market group, and our Research and Development department is similarly instrumental in these projects.

Examples of previous bespoke creations include:

- **Nuclear Defence** X-Ray and radiation shielding doors
- **Commercial** Aviation cascade hangar door system 72 metres wide x 17 metres high
- **Defence** High security sound-proof doorsets
- **Commercial** Pair of 22m x 12m mechanically driven theatre doors providing a combined 75dB acoustic performance
- **Offshore** Jet-fire rated walls and doors





# Engineered Products

Our engineered products carry maximum assurance through theoretical modelling and destructive testing.

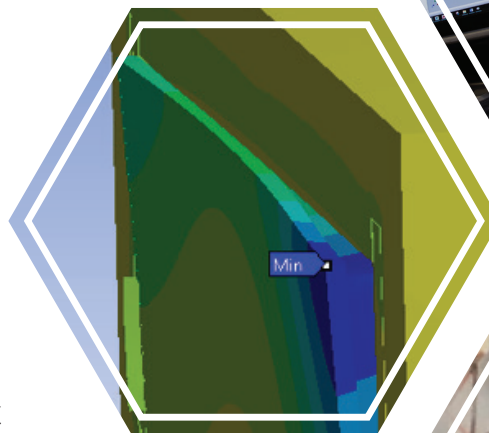
The basis for our engineered products is typically existing certified arrangements, to which customers require specific modifications. Our products are designed with flexibility in abundance from the outset. However, the laws of certification do not always permit adjustments without associated testing evidence.

Product development is offered as a standalone project or as part of a project team, in order to achieve an assured solution capable of withstanding the following performance criteria:

- Fire Integrity
- Fire Insulation
- Thermal Insulation
- Security
- Acoustics
- Pressure
- Blast
- Smoke Control
- Weather-tightness
- Gas-tightness
- Water-tightness
- Radiation Shielding
- Ballistic & Fragmentation
- ATEX compatible



Front-End Engineering



Computational Analysis



Physical Testing



Manufacture



Installation



## Standard Products

Our standard door range has been fine tuned over the years to reflect market demand for performance-certified, pre-engineered products.

These products are single or multi-functional and can incorporate finite **customisation**. As with any certified product, our sales & estimating team is on hand to inform you of any customisation restrictions and advise on products that meet your demands.



Our complete door range offers products that are tested and certified against the following standards:

- BS 476-22
- BS EN 1634-2
- IMO Resolution MSC 307 (88)
- DIN 4102
- CPNI
- LPS 1175
- EN 1627



Conventionally, standard products are requested by the commercial, offshore or security markets, where repetitive applications and consistency in design hold the utmost importance.

Our range of standard products includes:

- Security Doors
- Offshore Doors
- Acoustic Doors
- Cross Passage Doors
- Blast Doors & Systems
- Oversize Fire Doors
- Sliding & hangar doors
- Tunnel & Station Doors
- Shielding Doors
- Insulated Fire Doors





## Service & Maintenance

Established in June 2019, Booth Industries' dedicated service and maintenance division has been well received through all sectors. Backed up by 30 years' experience in offshore and onshore door maintenance, the division not only provides a single 24/7 call-out service to maintain Booth products but also incorporates:

- Service agreements for key contractors and suppliers
- A tiered **service plan system**
- A **dedicated contact centre** for quick turnarounds
- Call-out agreements on **all door systems**, including those from other manufacturers



For more information on the services we provide, or an immediate call out requirement, please contact our sales department on 01204 366333





# Quality Assurance

Booth Industries holds an array of certifications through accreditation bodies that allow us to safely provide assurance to our global customer base.

We are the **ONLY**  
designer, manufacturer  
and installer of complete  
door products to hold

**QC GRADE 1**  
accreditation, globally

Our internal quality management systems are registered for the design, manufacture, installation and maintenance of bespoke doors, panels and walls including, blast, fire, acoustic, security and industrial doors, against the following accreditations:

- ISO 9001:2015
- ISO 14001: 2015
- ISO 45001:2018
- RoSPA Gold Award for Safety (since 2014)

Our products are manufactured in conformity with BS EN 1090-2:2009 to EXC 02, where applicable.





## B-Tech

### Our New Addition



B-Tech is a new and versatile division of Booth Industries, manufacturing high quality components and assemblies. It has the capability to produce intricate machined parts and assemblies in a wide range of materials,

Typical products include;

- **Door lock mechanisms and handles**
- **Grab handles**
- **High-specification heavy-duty hinges**
- **Roller castor systems, suspended or floor types**
- **Push bar assemblies for emergency door applications**

B-Tech has 27 years of experience in demanding environments, satisfying equally demanding customers in sectors such as Rail, Oil and Gas, Construction, Defence and Nuclear.

Our in-house facilities include:

- **CNC lathes**
- **CNC milling machines**
- **Slotting and splining machines**
- **Conventional lathes and milling machines for larger or low volume projects**
- **Welding, steel, stainless steel**
- **Component polishing facilities**

With easy access to laser cutting resources and qualified in-house welding capability, B-Tech is able to produce complex, multi-part products, combining high precision with excellent aesthetics for architectural and public-facing applications where required.

We have established strong relationships with customers where immediate response is critical, and B-Tech will ensure that long-lead-time parts and materials are available from stock when appropriate arrangements are made.







# Boothindustries

*Assuring You From Start To Finish*





# Boothindustries

Part of  Avingtrans

For more information on our range of products and services, please contact:

Booth Industries  
PO Box 50  
Nelson Street  
Bolton  
United Kingdom  
BL3 2AP

-  [enquiries@booth-industries.co.uk](mailto:enquiries@booth-industries.co.uk)
-  [www.booth-industries.co.uk](http://www.booth-industries.co.uk)
-  +44 (0) 1204 366 333
-  [www.linkedin.com/company/booth-industries](https://www.linkedin.com/company/booth-industries)
-  @industriesbooth